

# Contract Lifecycle Management in SharePoint and Office 365 with Nintex



# About Gig Werks

*Be it in the Cloud with Office 365 or on premise, Gig Werks has delivered award winning targeted and focused business solutions for departments and industries, built on Microsoft SharePoint.*

## Awards and Recognition

- Microsoft Gold Partner since the firm's beginning in 2001
- Virtual Technology Specialists for the Microsoft New York Enterprise Group
- 5 Time Microsoft SharePoint Technical Excellence Partner Award Winner
- Approved Vendor of Microsoft Legal and Corporate Affairs Group (LCA)
- Invited into the Partner Evidence Program for SharePoint 2007, 2010, 2013 & 2016
- Nintex Partner Award Winner

## Solution Expertise for Full Microsoft Stack

- Office 365, SharePoint, Cloud Applications, Business Intelligence

## Solution Expertise for Full Nintex Stack

- Workflow, Forms, Hawkeye, Document Creation

## Industry Business Solution Expertise in:

- Professional Services, Legal Firms & Departments, Facilities Management, Architecture/Engineering/Construction (AEC), Financial Services, Healthcare/Pharmaceutical



# Objectives for Digital Transformation



- ✓ Closer to customers
- ✓ More efficient
- ✓ More agile & innovative
- ✓ More competitive
- ✓ More profitable

# 7,000+ Nintex Global Customers

RAPID PRODUCTIVITY GAINS ACROSS ALL INDUSTRIES

## TECHNOLOGY



## MANUFACTURING



## GOVERNMENT



## FINANCIAL SERVICES



## RETAIL & CPG



## SERVICES



## HEALTHCARE



## ENERGY



## ENTERTAINMENT & MEDIA



# A Few of Our Mutual Customers

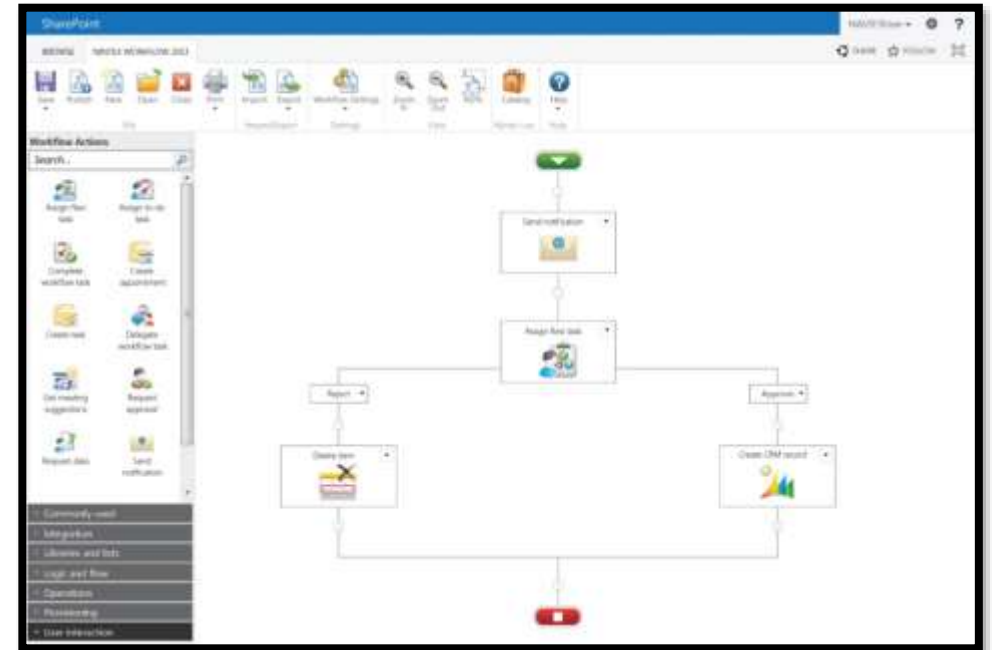


# Modernize with Nintex

Nintex Workflow for Office 365 and SharePoint enables organizations to extend business process automation to more people, places and devices, delivering workflow for everyone. Nintex Workflow adds a drag-and-drop workflow designer, advanced connectivity, and rich workflow features to give customers more power and flexibility.

## Benefits and ROI of Nintex Include:

- Transform legacy systems and processes to advanced workflows & forms
- Reusable templates and modules
- Share and align business practices across teams
- Reduced IT burden
- Efficiency gains and reduced processing costs
- See real-time status of workflows
- Measure and improve business performance
- Built-In ROI Calculator
- Lazy Approval



# What is Contract Lifecycle Management?

- According to Wikipedia, Contract Lifecycle Management (CLM) is the proactive, methodical management of a contract from initiation through award, compliance and renewal. Implementing CLM can lead to significant improvements in cost savings and efficiency.
- We use terms like:
  - Cradle to Grave
  - Governed Process
  - Records Management
- While this all applicable, the successful implementation of a CLM is different, has different priorities and different criteria of success to all the different actors that play a role in that process

# Goals of Implementing a CLM

- **Automate** Contract and Document Generation
- **Governed, secure** cradle to grave management
- **Reporting** of all contract Lifecycle stages
- **Connect** users, business units in a seamless collaborative solution
- Avoid the “**one size fits all**”
- Drive agile development and rapid development of solution designed for **your enterprise needs**
- **Driving efficiency & accuracy** by eliminating rekeying of information
- Extend the ROI of **existing technology investments**
- **Extensible Value** across business units





# Two Approaches to CLM - Point Vs. Platform

## Point Solution Approach

Vertically Tiered  
Industry Specific  
Predictable Results  
Speed to Market  
Vertically Tiered

## Platform Solution Approach

Reusable  
Extended Value to Other Business Units  
Scales Horizontally and Vertically  
Leverage Existing Technology Investment  
Flexible: "The Last 20%"  
Best of Breed

# Contract Lifecycle Management with Nintex

- Nintex Drives Agile
- Nintex Connects Systems
- Nintex Automates Content
- Nintex Connects users & decision makers through workflow
- Nintex informs through dynamic reporting

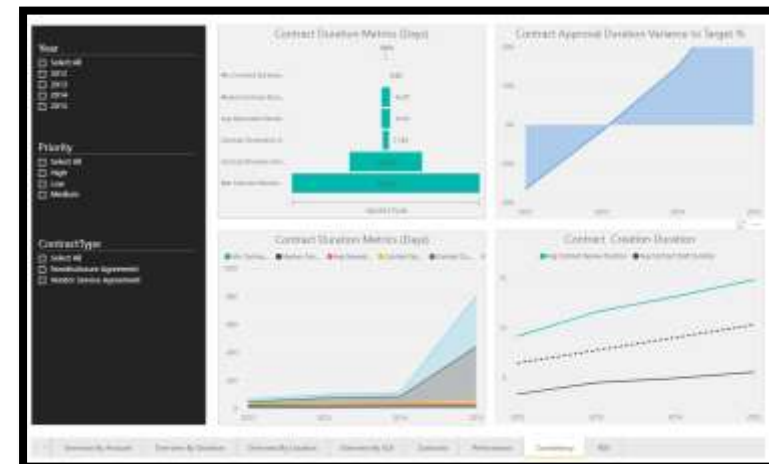
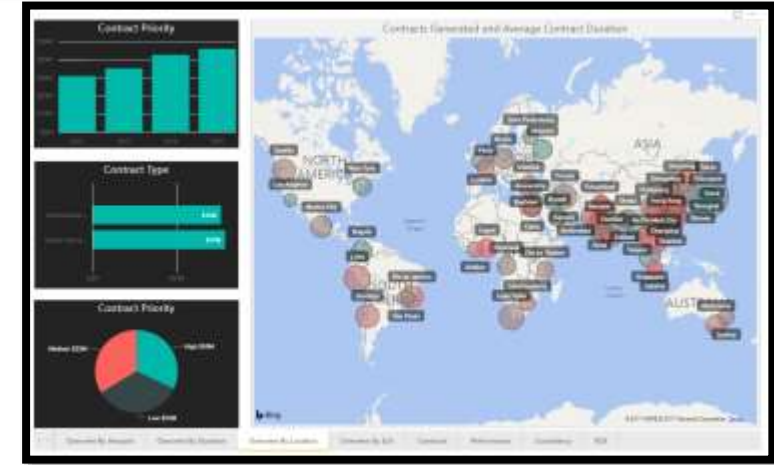
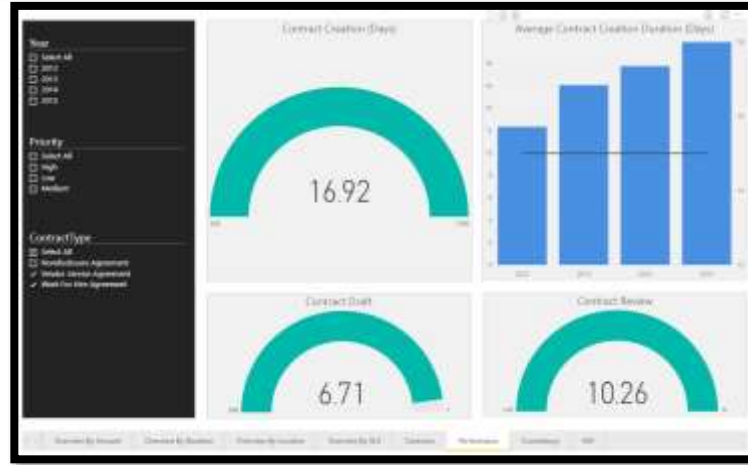
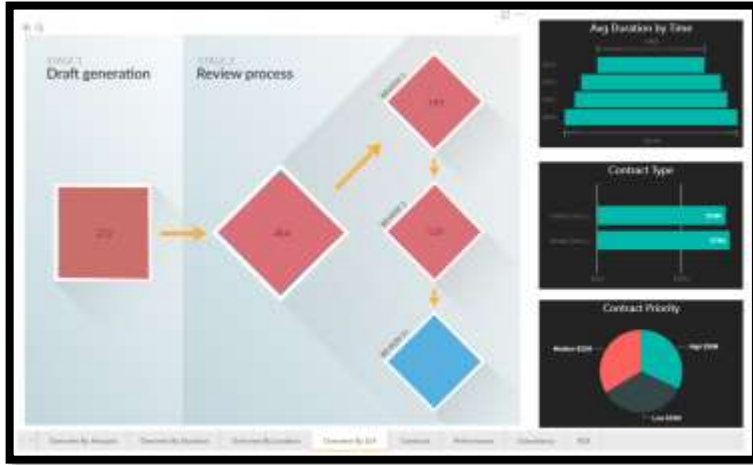


# Connect Information Across the Enterprise

Assemble Content With Pre-Built Connectors to:



# Controlled Delivery, Tracking & Reporting of Contracts and Documents



# Extend Value Across the Enterprise with the ability to Automate the Creation of

**NINTEX**

Contracts	Pipeline Reviews	Financial Pitch Books	Legal Advice
Quotes	Renewals	Statements of Advice	Terms & Conditions
RFP's	Response Letters	Annual Reports	Customer Correspondences
Proposals	Work Order Summaries	Invoices	Notifications for Doctors, Pharmacists & Customers
Account Plans	NDA's	Quote metrics	Project Summaries
Inventory Reports	MSA's	Forecasts	Candidate Profiles
Activity Logs	Licensing Agreements	Business Reviews	Repair Orders
Case History	Consumption Reports	Commission Reports	



Any Content, Any Source



Create Documents



Consistent Delivery

# A Day in the Life with Nintex CLM – Demo

**Christian Holslin**

Enterprise Architect,  
Director of Client Services

