



Moving to the Microsoft Cloud:

Best Practices & Use of SharePoint, OneDrive, Teams & Azure Blob Storage, Migration Strategies & Making it Work for End-Users




Going to the Microsoft Cloud

What to Consider

- Which platform to use – from feature, to governance to price?
- How do you move that content as well as all the workflows, processes and governance currently in place?
- How you ensure your customers, the end-user, has the optimal user experience to drive adoption and bring value to your company



Agenda

- Who We Are
- Advantages of the Going to the Microsoft Cloud
- What to Consider?
- Which Platform to Use?
- How Do You Move that Content?
- End-User Experience and Adoption
 - Demonstration using  **nintex**

Today' Presenters

Joe Giegerich

President
Gig Werks

[Connect on LinkedIn](#)



Christian Holslin

Enterprise Architect,
Director of Client Services
Gig Werks

[Connect on LinkedIn](#)



Be it in the Cloud with Office 365 or on premise, Gig Werks has delivered award winning targeted and focused business solutions for departments and industries, built on the Microsoft Stack

About Gig Werks

- Award Winning Microsoft Gold Partner since 2001
- Solution Experience & Expertise across the full Microsoft Stack (Office 365, SharePoint, SQL, Azure, Teams, Outlook, Power BI, etc.)
- Award Winning & Premier Nintex Partner
- Microsoft Virtual Technology Specialists (VTSP)

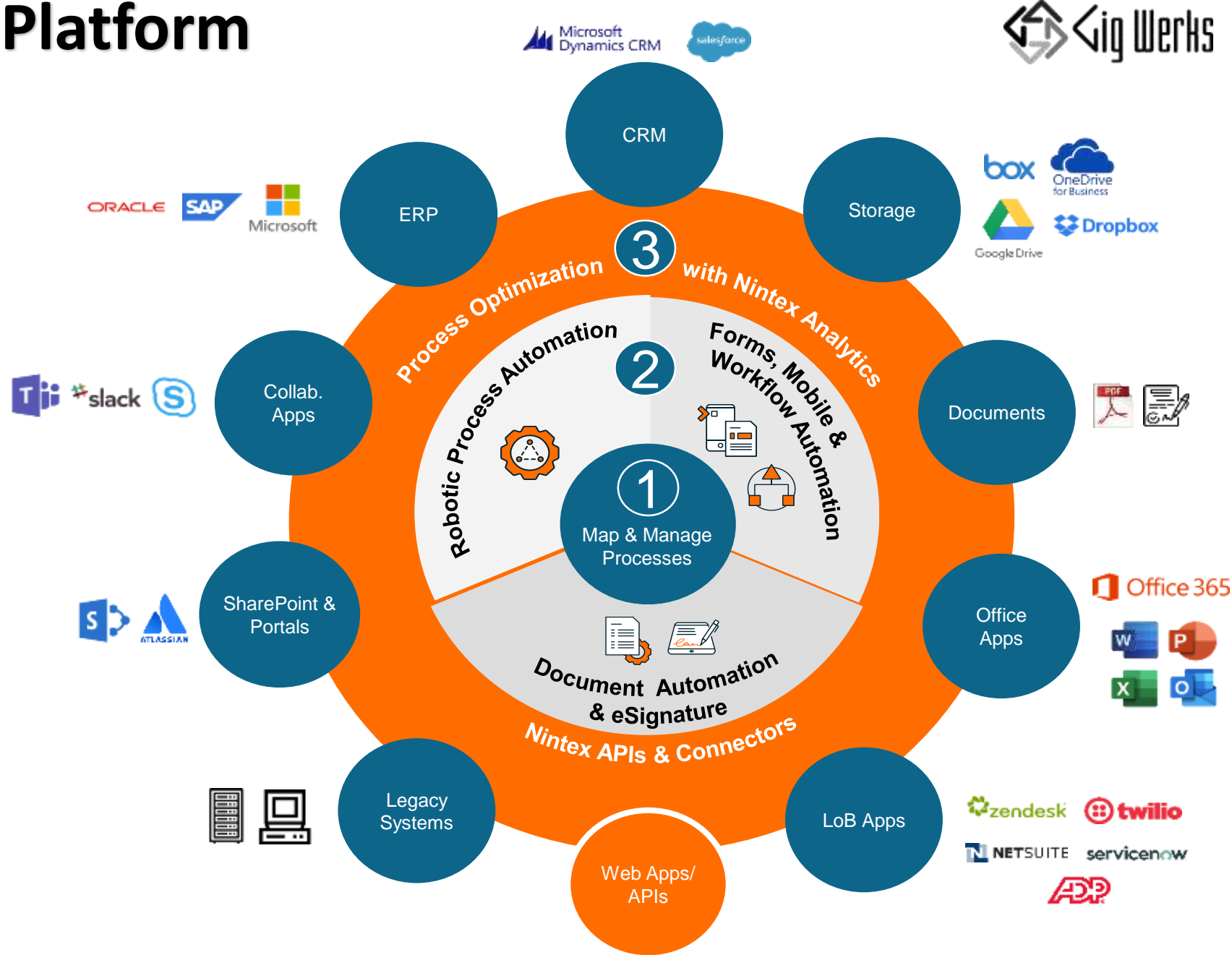
Gig Werks Value and Expertise Includes

User Experience	User Adoption	Information Architecture
Project Execution	Successful Agile Implementation	Workflow/Process Automation
Modern Cloud	Taxonomy	Document Management

The Nintex Process Platform

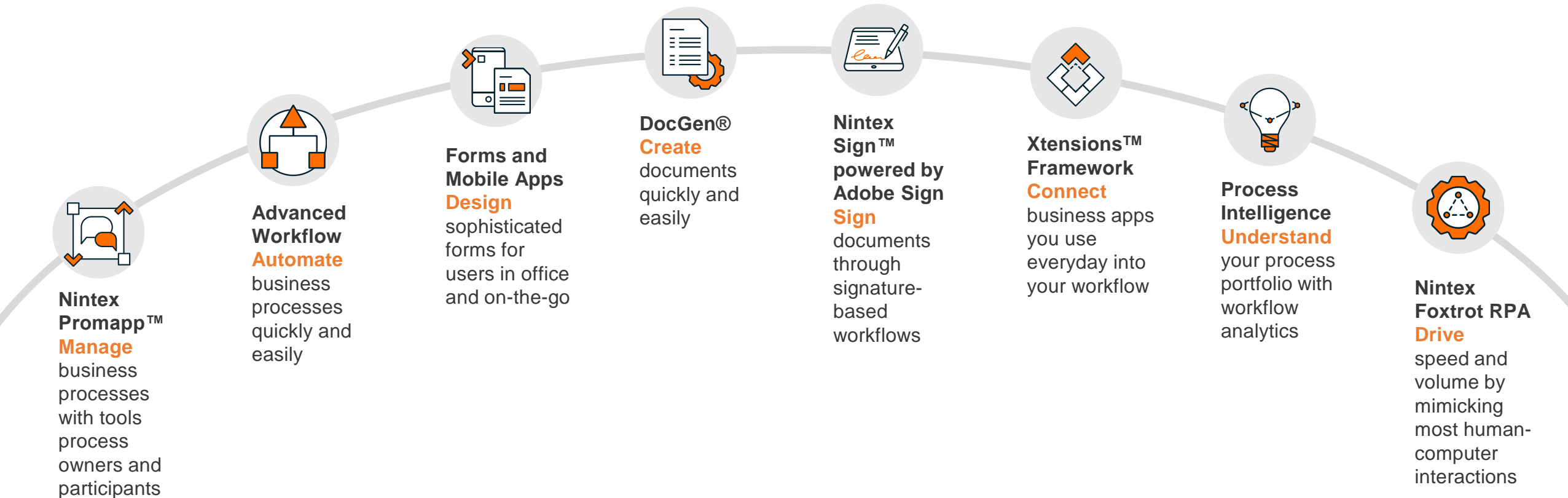


The most complete platform for process management and automation





The most **complete** platform for
process management and automation



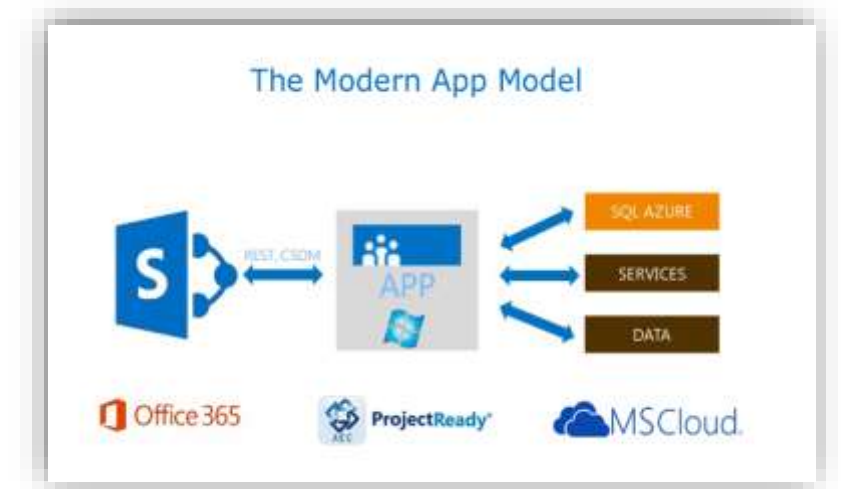
Advantages of Going to the Microsoft Cloud

- No Infrastructure Cost or Support Needed
- Automatic Updates and Maintenance
- Always have the latest version of Microsoft Products
- Accessibility from Anywhere
- Community and Phone Support
- Guaranteed 99.9% Uptime
(Financially backed SLA from Microsoft)
- Predictable Cost
- Flexible Bandwidth
- Security, Compliance, and Privacy from Microsoft
- Speed to Market



Scalability & Flexibility Advantages of the Cloud

- Affordable Storage
- Grow your business while spending less
- Invest for tomorrow with lower up-front costs
- Improve IT flexibility and responsiveness
- Modern cloud applications



 **ProjectReady®**

Which Platform to Use?



Going to the Microsoft Cloud

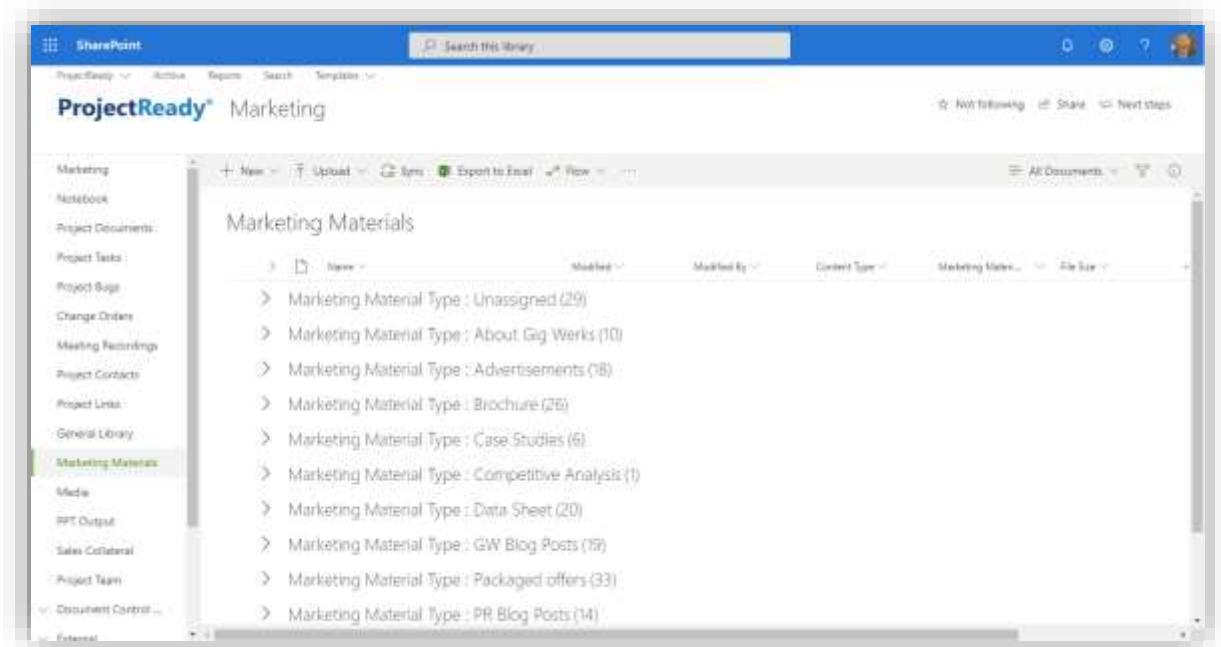
Which Platform – SharePoint

Best Use

- Shared system of record
- Official copy, templates
- Company-wide
- Secure documents
- Configurable user experience

Governance

- Fully governable
- Set permissions
- Maintain audit trails
- Apply policies for retention and disposal of documents



Going to the Microsoft Cloud

Which Platform – OneDrive

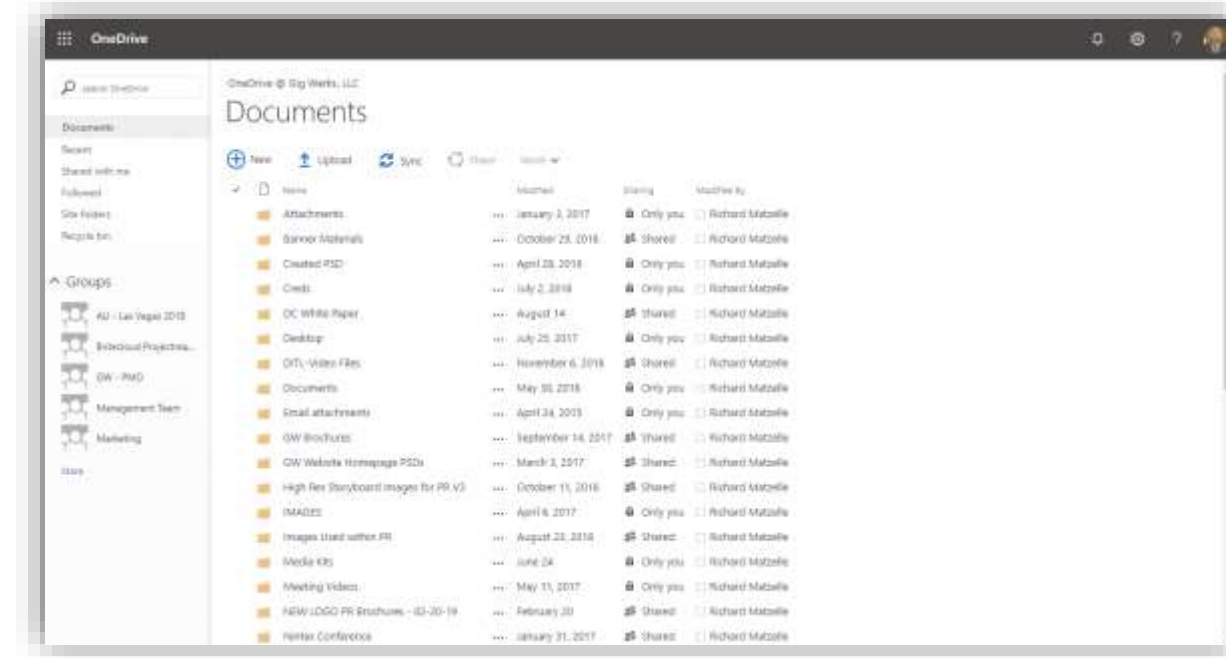
Best Use

- Personal content
- Working copy
- Safe place to keep private content for yourself
- Significant storage volume for yourself
- On the go portability



Governance

- Intention is not that it is structured or governed
- Governable with integration into active directory
- Administrator of the tenant can govern access



Going to the Microsoft Cloud

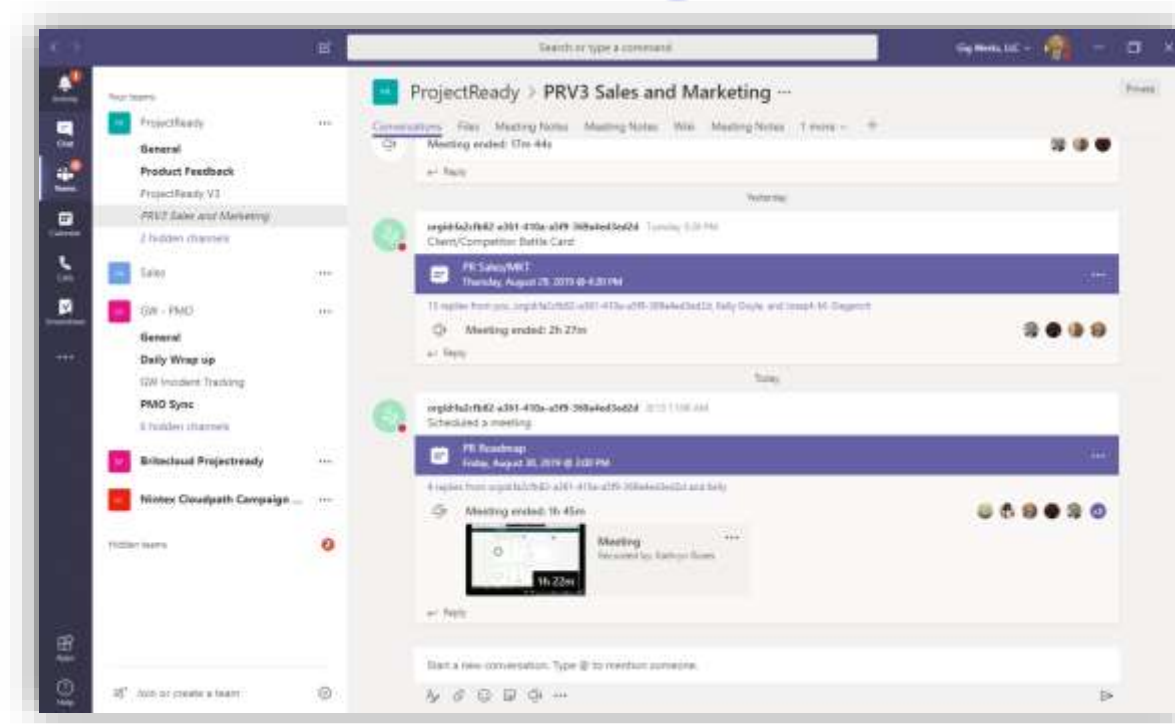
Which Platform – Microsoft Teams

Best Use

- Content should go to a structured area like SharePoint
- Great Place for unstructured conversations & Dynamic Collaboration around a topic
- Cohesive access to the team
- Small group collaboration

Governance

- Team/Group Based Permissions
- Simple and easy to use
- Facilitates self governance



Going to the Microsoft Cloud

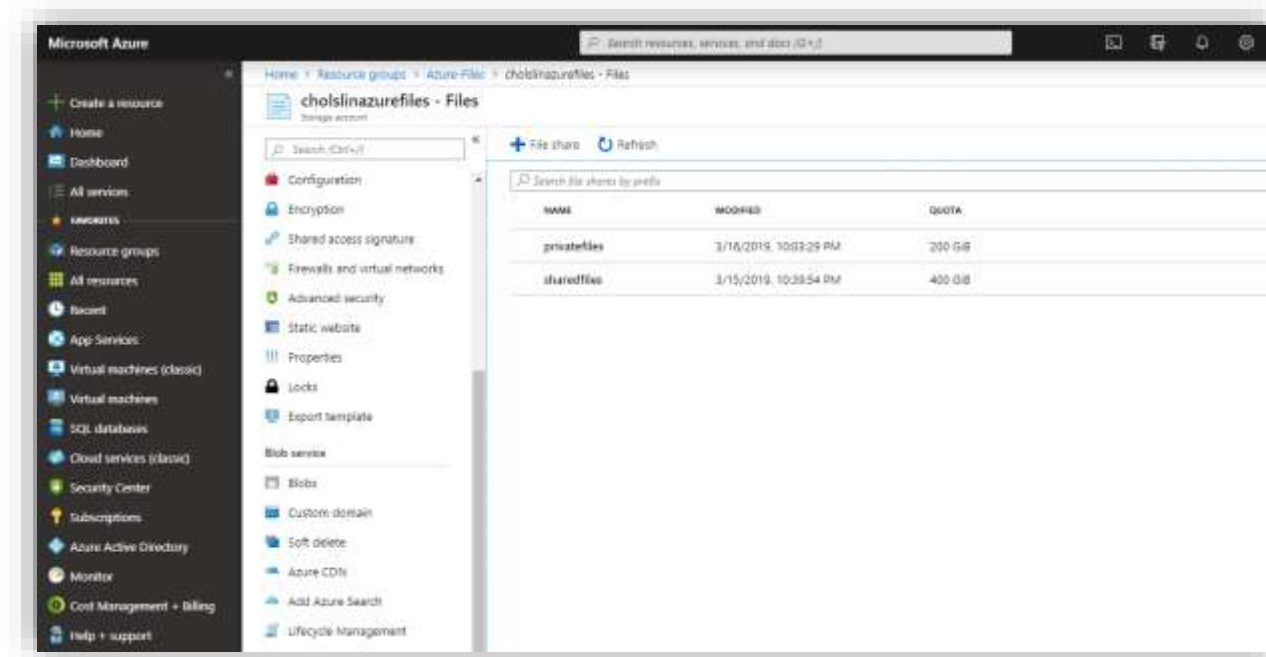
Which Platform – Azure Blob Storage

Best Use

- Low cost for long-term archive storage
- Replaces local file shares
- Large files
- Fast upload and download
- Secured using Azure Active Directory

Governance

- Governable with integration into active directory
- Can create multiple file shares inside Azure files with different credentials to protect content



How Do You Move That Content?

Quest  AvePoint®

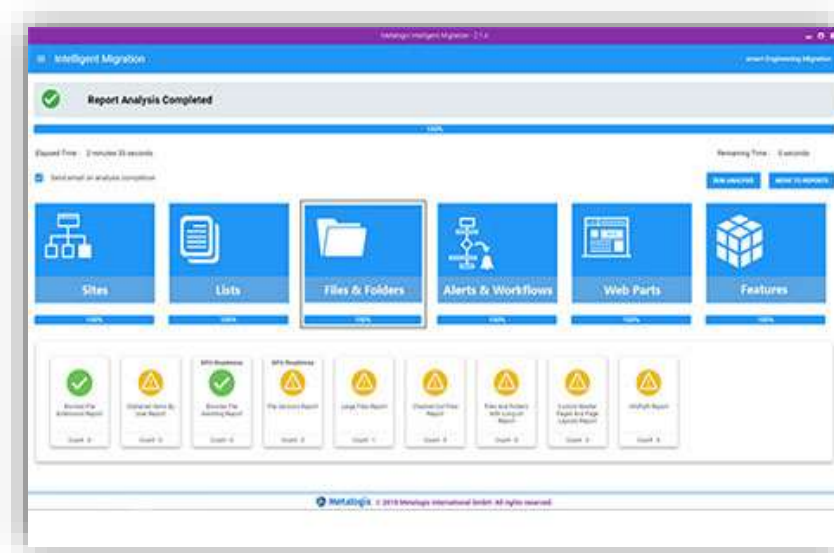
Going to the Microsoft Cloud

How Do You Move That Content?

Quest

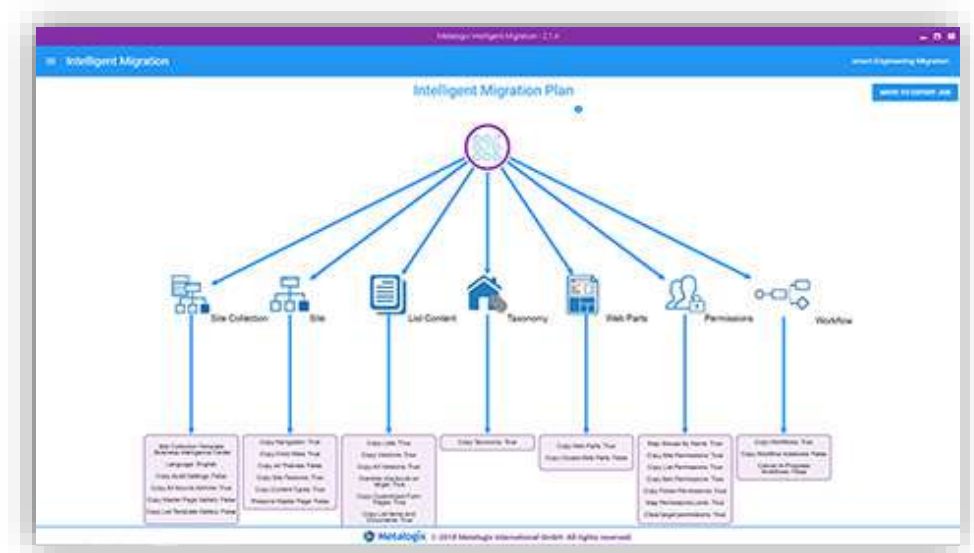
Metalogix Content Matrix

Handle complex migrations and consolidate file shares quickly without disruption to your organization. Reallocate content across multiple different virtual or physical environments to gain the maximum possible throughput during a migration. Move massive amounts of content with zero downtime and unlimited site and content movement.



Metalogix Intelligent Migration

Analyze your environment prior to any migration efforts and leverage a user-friendly wizard interface that assesses and migrates your content with maximum throughput. SharePoint admins can easily understand the desired end-state of their environment and implement that vision with a successful migration strategy.



Going to the Microsoft Cloud

How Do You Move That Content?



Keep it intact

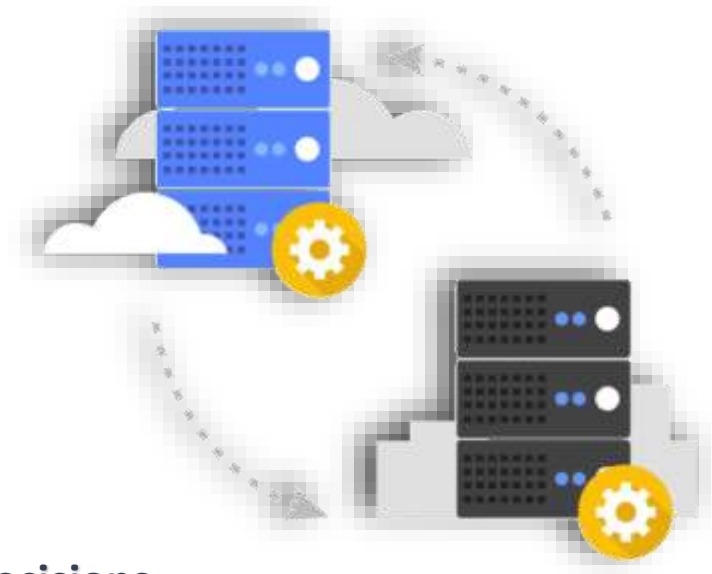
Keep all permissions and metadata as you move, or be selective and absorb the new security structures on the other side.

Move it quickly

Meet aggressive migration timelines with multi-threading or High-Speed Migration APIs.

Remain in sync

Keep source and destination in sync with scheduling and full or incremental migration options until you roll-out to users.



Decisions, decisions

Migrate in bulk—or select individual containers to migrate. Filter to get even more specific.

Transform data

Comprehensive mapping ensures data from unlike systems are properly reflected and retained in SharePoint or Office 365.

End-User Experience and Adoption



Christian Holslin

Director of Client Services, Enterprise Solution Architect
Gig Werks

Going to the Microsoft Cloud

End-User Experience and Adoption

- With your content & workflows in the cloud, take advantage of NWC (Nintex Workflow Cloud)
- Create a seamless UX for users to interact with content regardless of where it resides

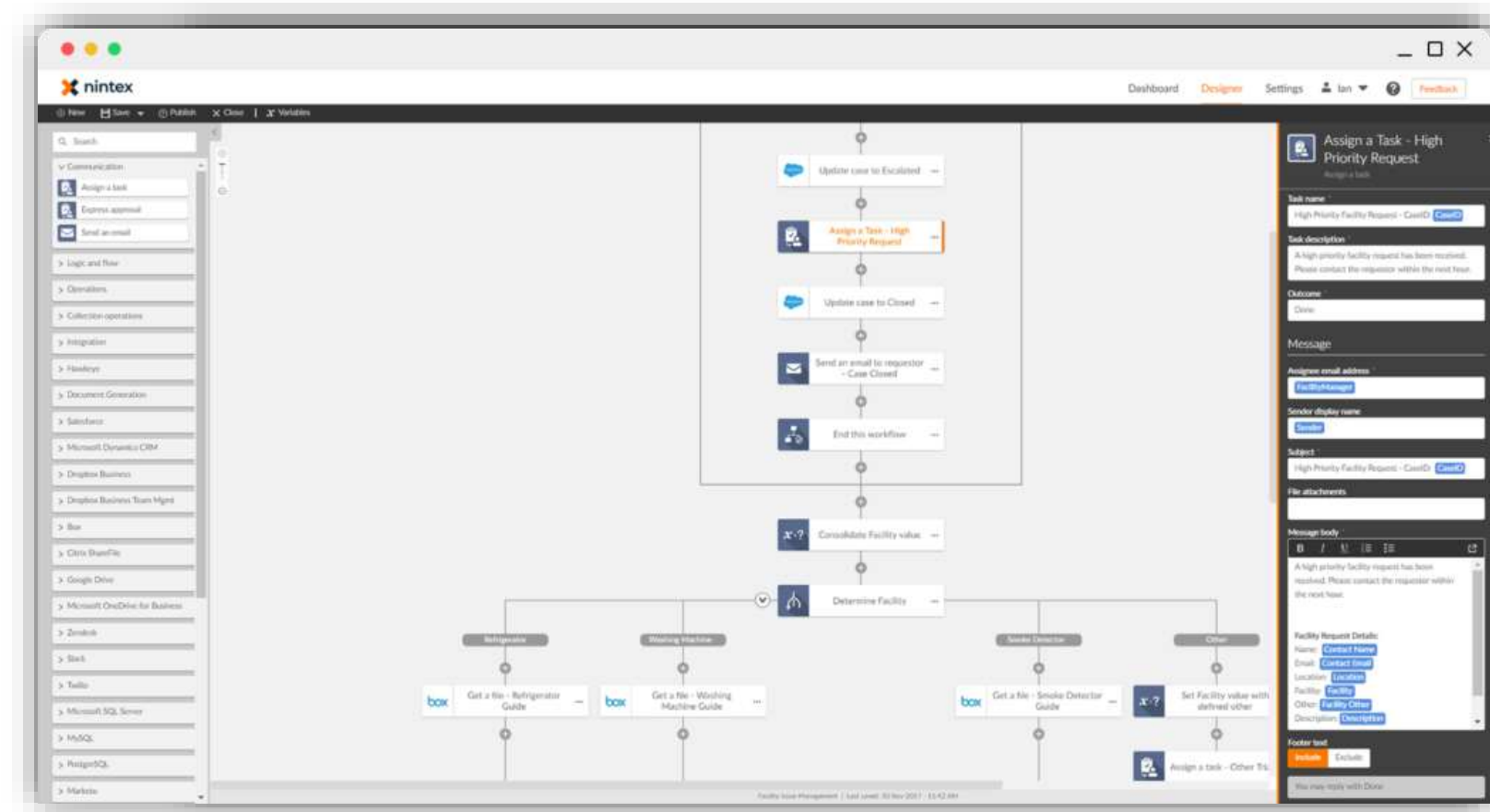


Going to the Microsoft Cloud

End-User Experience and Adoption

Nintex Workflow Cloud (NWC)

- Seamlessly connect your people and work
- Built for the Cloud
- Quickly scale your business



Use Case

Legal Review for Financial Services



Investor initiates
new investment
account

Investor identifies
legal review team
during setup

Nintex orchestrates
creation of extranet
and notification to
legal review team

How we built it

Use Case

Legal Review for Financial Services



Investor initiates
new investment
account

Investor identifies
legal review team
during setup

Nintex orchestrates
creation of extranet
and notification to
legal review team

How we built it

Activity

Chat

Teams

Calendar

Files

...

Your teams

A

Accounting

...

General

I

Investments

...

General

Investments > General ...

ConversationsFilesWikiNew Fund +

ClosePrint

ServicesCorp New Investment Form

Investment Title * ⓘ

Muni Ohio Local Development Fund

Account department will authorize this title and send you a notification once it has been issued

Target Fund Value *

\$3500000

Set the desired or expected value of this fund

Account Number ⓘ

PENDING

An account number will be assigned automatically. If you have a reserved account number enter it here now.

External Legal Approval

Does this investment require external legal counsel? ⓘ

Yes ☒

Legal Counsel * ⓘ

AssureLegal LLP

Select your desired Legal counsel practice

Submit

www.Gig-Werks.com



ServicesCorp

HomeInvestmentsLegal CopyEdit






☆ Not following  Share

 Search Investments

 New  Quick edit  Export to Excel  Nintex Workflow  Nintex Forms  PowerApps  Flow ...

 All Items  

Investments

Title ▾	Current As Of ▾	Target Fund Value ▾	Account Number ▾	Legal Counsel ▾	Legal Review ▾	Legal Review Site ▾	+ Add column
 SCI-01X-GDSRVS	5 hours ago	\$37,550,000.00	10007639894	AssureLegal LLP	Active	LREV1	
 SCI-01C-LCOH	5 hours ago	\$8,500,000.00	10009538746	AttorneyTree LLP	Active	LREV2	
 SCI-01F-PROPFT	5 hours ago	\$172,790,000.00	10006746644	AssureLegal LLP	Active	LREV3	
 SCI-02A-CCBOXCO	5 hours ago	\$49,970,000.00	10008847621	AssureLegal LLP	Active	LREV4	
 SCI-02F-CRPBND	5 hours ago	\$7,770,000.00	10004746453	Legalsy LLP	Active	LREV5	

Use Case

Legal Review for Financial Services



Investor initiates
new investment
account

Investor identifies
legal review team
during setup

Nintex orchestrates
creation of extranet
and notification to
legal review team

How we built it

Use Case

Legal Review for Financial Services



Investor initiates
new investment
account

Investor identifies
legal review team
during setup

Nintex orchestrates
creation of extranet
and notification to
legal review team

How we built it



Search Mail and People

New | Delete Archive Junk | Sweep Move to Categories ...

Undo

Folders

^ Favorites

Inbox 1

Sent Items

Drafts

^ Christian Holstin

Inbox 1

Drafts

Sent Items

Deleted Items

Archive

Conversation History

Junk Email

Notes

^ Groups

Extranet 1

Focused Other

Filter ▾

Next: No events for the next two days.

Agenda

☐ nintex@workflowcloud.com

[\[SC\] Legal Review Request - New Investment](#) 9:31 PM

ServicesCorp - Legal Services Request This is an automat...

[SC] Legal Review Request - New Investment



nintex@workflowcloud.com

Today, 9:31 PM

Christian Holstin ▾



Reply all | ▾

ServicesCorp - Legal Services Request

This is an automated message from the Nintex Workflow Cloud intended for AssureLegal LLP from ServicesCorp for a legal review request.

ServicesCorp is started a new investment fund and requires your legal review of the forms.


Site: <https://gigsinc.sharepoint.com/sites/Extranet/LREV1>

Getting too much email from nintex@workflowcloud.com? [You can unsubscribe](#)



Legal Review - SCI-01X-GDSRVS

Search this site

- Home
- Notebook
- Documents
- Pages
- Site contents
- Recycle Bin
-  EDIT LINKS

Documents

 New  Upload  Sync  Share More 

✓	Name	Modified	Modified By	Version
	Investment Disclosures SCI-01X-GDSRVS 	... 28 minutes ago	 Christian Holstin	2.0
	Risk Statement SCI-01X-GDSRVS 	... 28 minutes ago	 Christian Holstin	2.0

Drag files here to upload

Use Case

Legal Review for Financial Services



Investor initiates
new investment
account

Investor identifies
legal review team
during setup

Nintex orchestrates
creation of extranet
and notification to
legal review team

How we built it

Use Case

Legal Review for Financial Services





Investor initiates
new investment
account


Investor identifies
legal review team
during setup


Nintex orchestrates
creation of extranet
and notification to
legal review team


How we built it


 Search Legal Copy


 New


 Upload


 Quick edit


 Sync

 Export to Excel


 Nintex Workflow


 Nintex Forms

 Flow






All Documents





Legal Copy

 Name	Modified	Modified By	+ Add column
 Investment Disclosures.docx	14 minutes ago	Christian Holslin	
 Risk Statement.docx	13 minutes ago	Christian Holslin	

Communication

Assign a task

Send an email

> Logic and flow

> Operations

> Collection operations

> Integration

> Hawkeye

> Document Generation

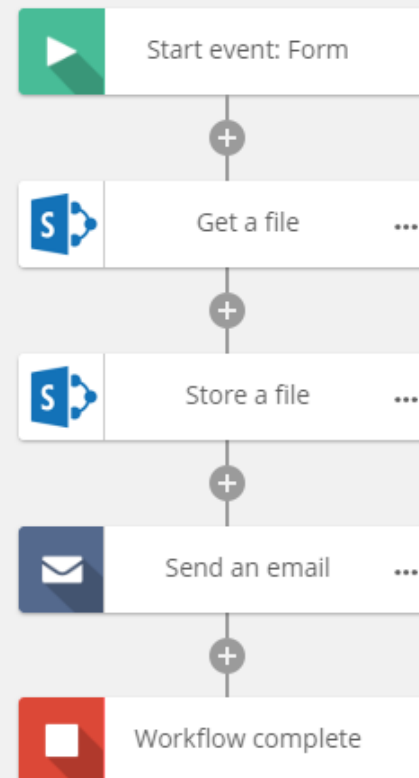
> Salesforce

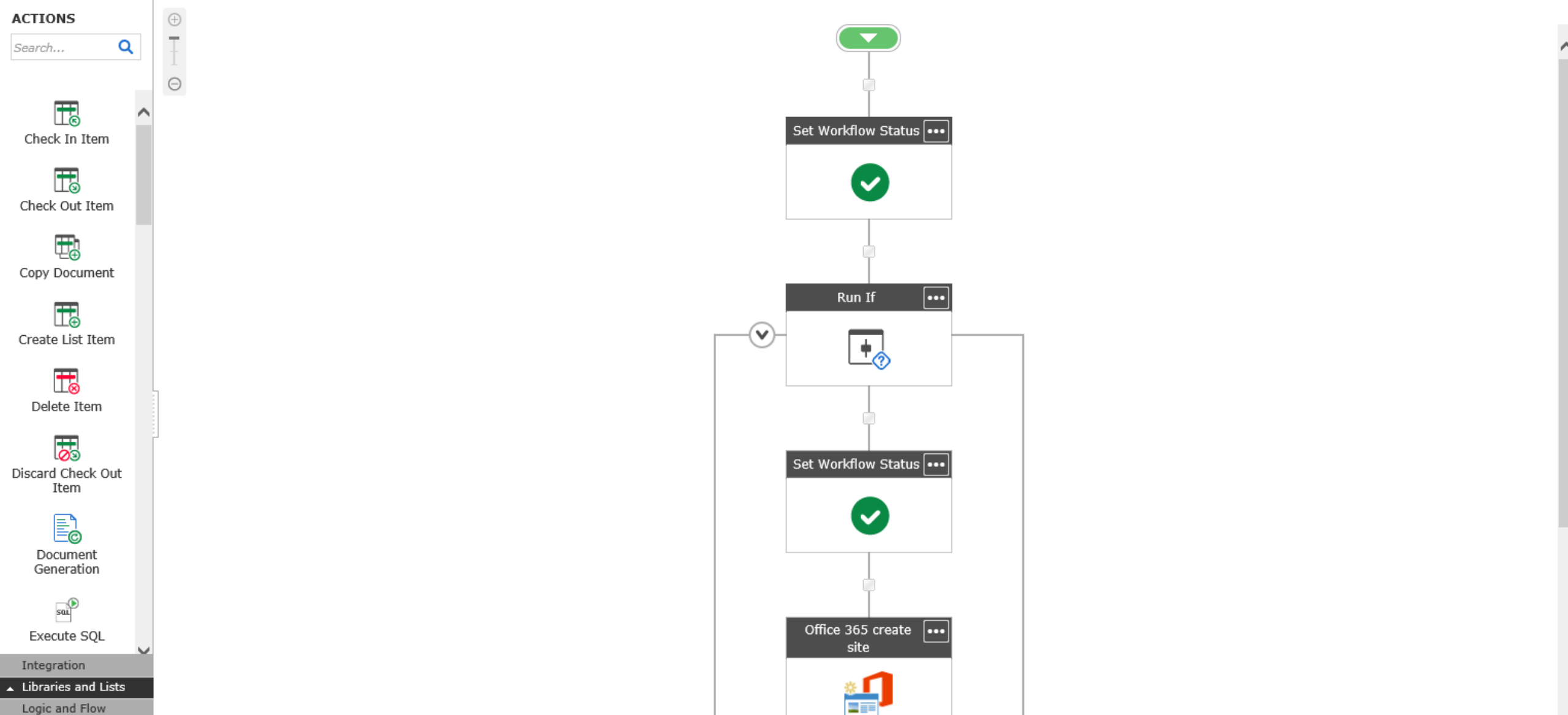
> Microsoft Dynamics CRM

> Dropbox Business

> Box

> Google Drive





Questions & Answers

Please use the Questions Tab of your GoToWebinar Control Panel to type in your questions and we will answer them now for you live.

Also, Please don't forget about the survey!

Please also check out our most recent podcast:
Microsoft Cloud Content - Why and when to use OneDrive, SharePoint, Teams and Azure Blob Storage

<https://soundcloud.com/enterprise-tech-podcast/sets/microsoft-cloud-content-why>



www.Gig-Werks.com

salesinfo@gig-werks.com

914-207-1110

Please also check out our most recent podcast:
**Microsoft Cloud Content - Why and when to use
OneDrive, SharePoint, Teams and Azure Blob Storage**

<https://soundcloud.com/enterprise-tech-podcast/sets/microsoft-cloud-content-why>

